



**BENJAMIN
STEVENS.**
estate agents



Florida Close, Bushey WD23 1ET

Offers In Excess Of £1,300,000

A Beautifully presented bright and spacious FIVE BEDROOM, TWO BATHROOM, THREE RECEPTION ROOM DETACHED FAMILY RESIDENCE situated in an extremely sought after residential close off one of Bushey Heaths most sought after residential roads California Lane, conveniently located and within walking distance to all local shopping and transport facilities. The property is being offered in good decorative order and benefits from:

Replacement Double glazed Windows, Gas Fired Heating To Radiators, Spacious Entrance Hall, Guest Cloakroom, Living Room, Dining Room, Playroom, Fully Fitted Kitchen/Breakfast Room, Utility Room, Bedroom One With En Suite Shower Room, Four Further Bedrooms, Family Bathroom, Secluded Rear Garden, Off Street Parking For Several Cars With Two Electric Charging Ports.

CHAIN FREE

Florida Close, Bushey WD23 1ET

Exterior:



Living Room:



Entrance Hall:



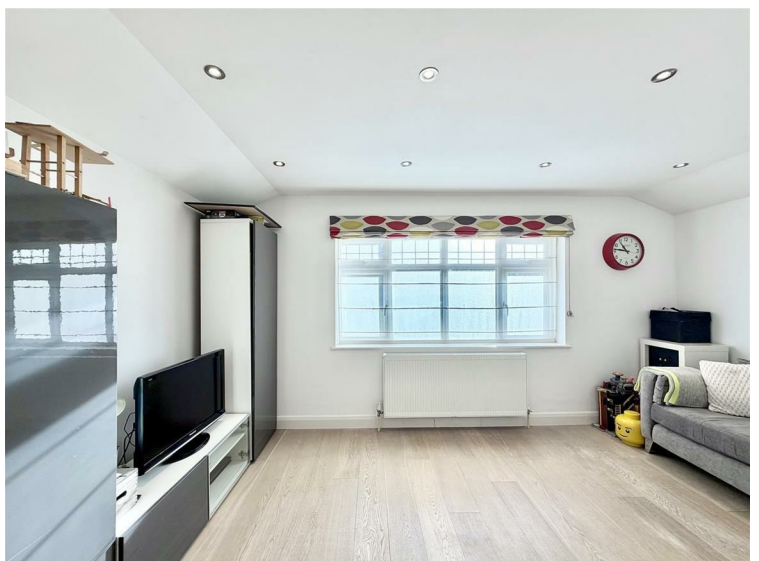
Dining Room:



Living Room:



Playroom:



Florida Close, Bushey WD23 1ET

Playroom:



Kitchen/Breakfast Room:



Kitchen/Breakfast Room:



Kitchen/Breakfast Room:



Kitchen/Breakfast Room:



Bedroom One:



Florida Close, Bushey WD23 1ET

En Suite Dressing Room:



Bedroom Two:



En Suite Shower Room:



Bedroom Three:



Bedroom Two:



Bedroom Four:



Florida Close, Bushey WD23 1ET

Bedroom Five:



Exterior Rear:



Family Bathroom:



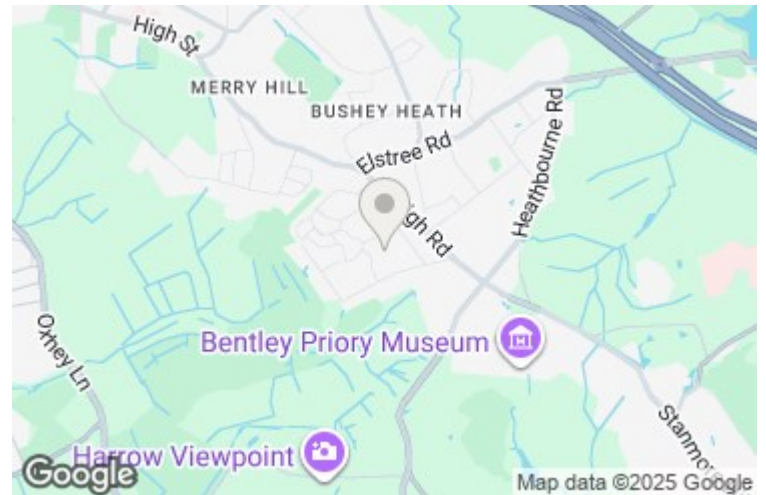
Tenure:

This is a freehold property. Council Tax Band G £3,815 per annum. As always buyers are advised to gain verification from their surveyor/solicitor during the conveyancing process.

Disclaimer:

While every care and effort has been made to ensure these details are correct their accuracy cannot be guaranteed and so should not form part of any contract.

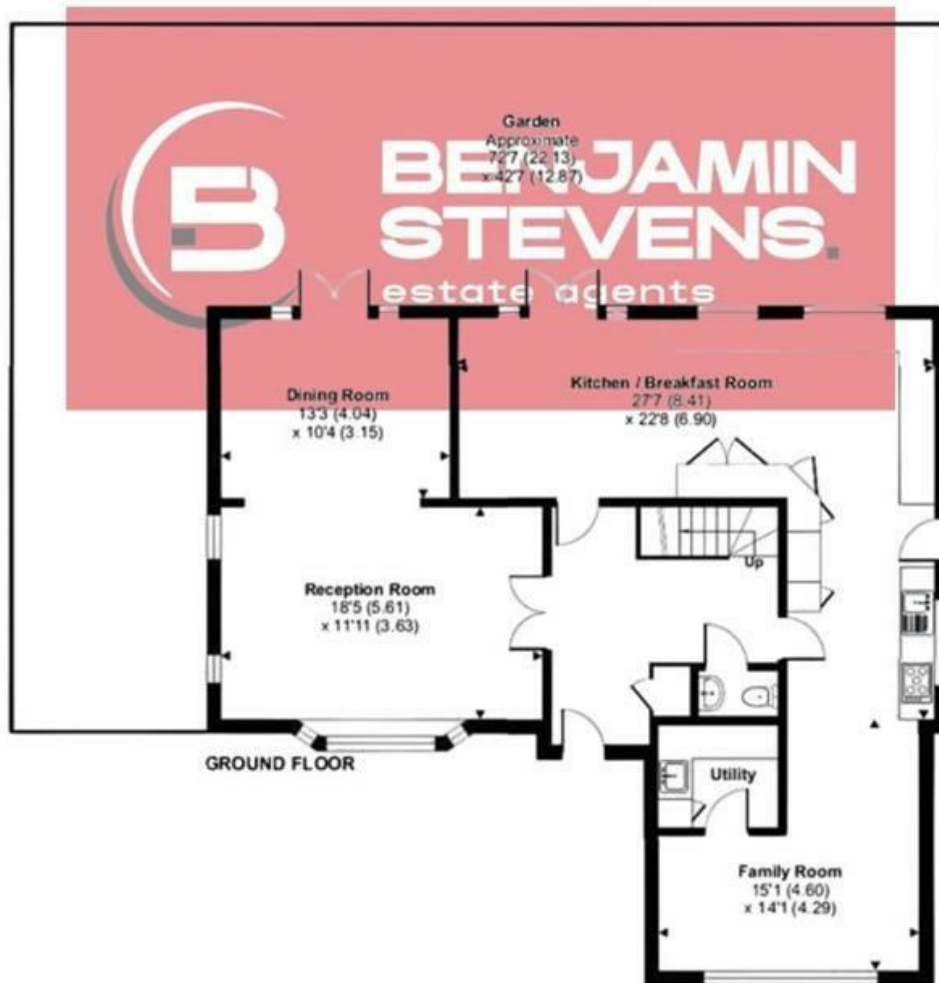
Garden:



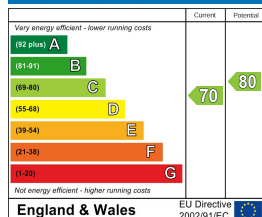
Florida Close, Bushey Heath, Bushey, WD23

Approximate Area = 2344 sq ft / 199.1 sq

For identification only - Not to scale



Energy Efficiency Rating



Environmental Impact (CO₂) Rating

